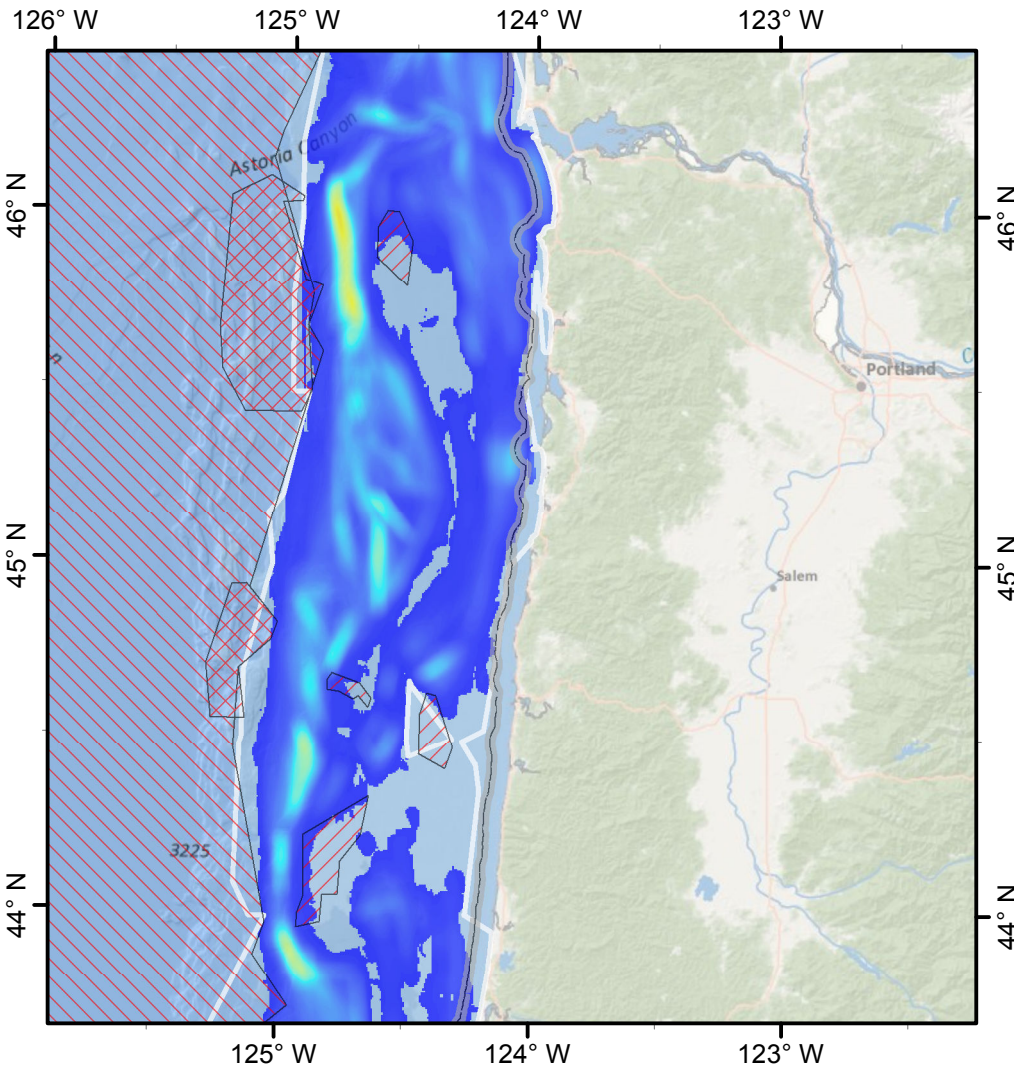
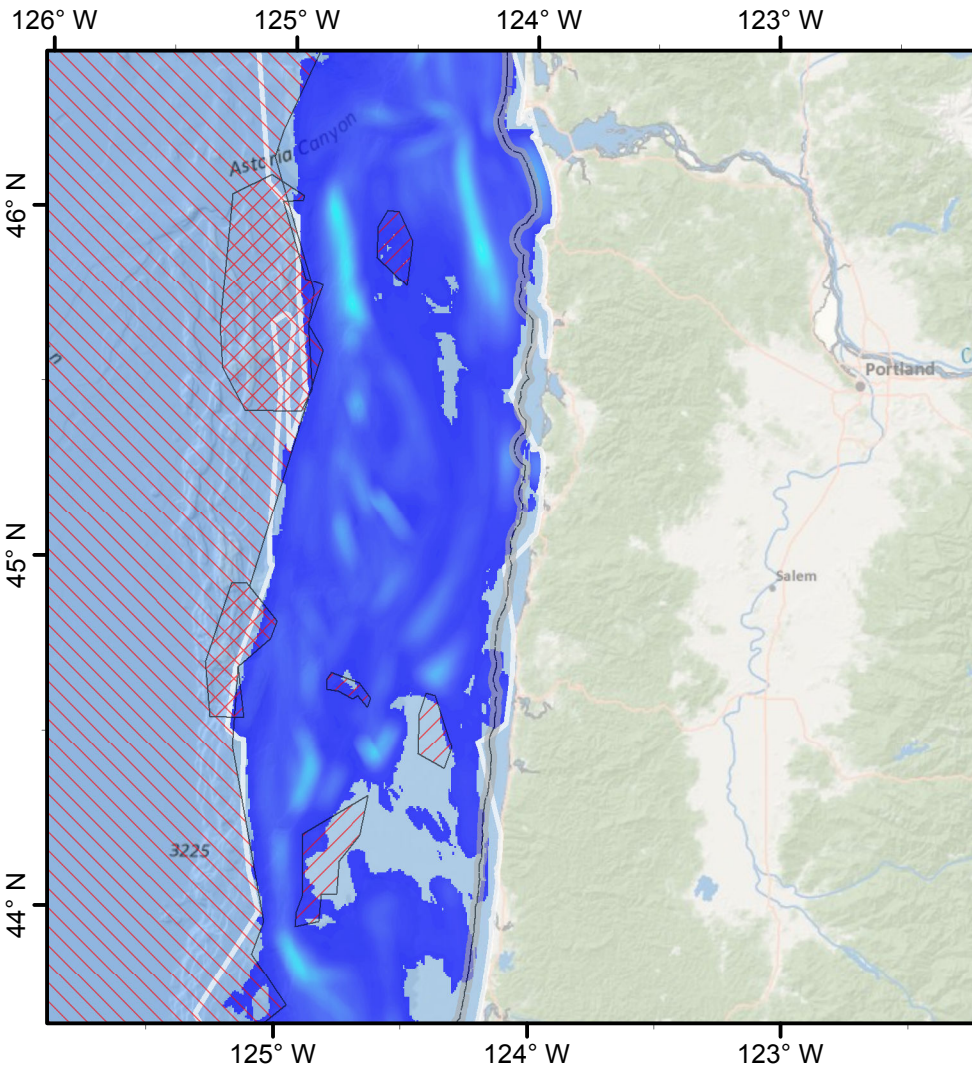


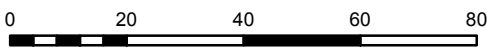
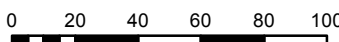
Before

# Bottom Trawl Fishing Effort (PacFIN)

After



**B2**



Map Scale: 1:2,400,000

Date Saved: 20 Aug 2012

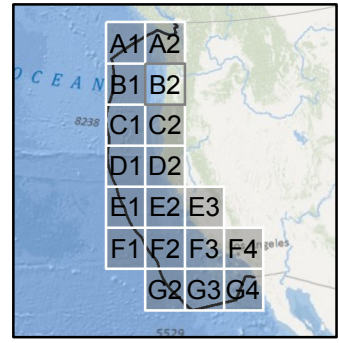
Authors: Curt Whitmire & Marlene Bellman (NMFS/NWFSC)

**Effort (km/km<sup>2</sup>)**

High : 221.931

Low : 0.008

- Extent Polygon
- EFH Cons. Area
- State Territorial Sea



Map 2 of 8

Search Radius: 3,000 m  
Cell Size: 500 m